

Where would these animals normally live? Draw a line between each animal and its habitat.



Pond



Ocean



Soil



Woodland

- Worm
- Crab
- Frog
- Rabbit
- Dolphin
- Millipede
- Butterfly
- Starfish
- Woodpecker
- Minnow
- Centipede
- Dragonfly



Sand In My Shoes: Take a Child Outdoors

Sponsored by the Sandhills Area Land Trust, SIMS is designed to create in children a life-long love of nature and instill an understanding of the interconnectedness of all things, resulting in a generation of children knowledgeable and passionate about their future role as "stewards of tomorrow."

To learn more about our program you can go to our website www.sandhillslandtrust.org or visit us on our facebook page.

Please enjoy the activities that review the concepts addressed during the SIMS program. To get your answers for the activities check your teacher's answer sheet or go to our website above and click on the tab Sand in My Shoes.

Word Search

- abiotic
- adaptation
- biotic
- ecosystem
- food web
- habitat
- soil

V E O A B I O T I C
 I O F O O D W E B Y
 Y Z P B I O T I C N
 A D A P T A T I O N
 S N V L S P P P T U
 Q E X W I W O F Z O
 R W F Z Z O C A L C
 B M E T S Y S O C E
 D C T U C M H W A R
 R U D H A B I T A T

Activity: Help Ant get to Soil School!



Soil is amazing!

Fill in the letters.

Soil is made up of:

S _ _ _ D

C _ _ _ Y

H _ _ _ _ S

Match the adaptation to the animal.



Four front teeth never stop growing, so always gnawing.



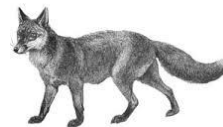
Mouth opens to swallow food larger than its own head.



Hooked beak for eating prey.



Strong beak for drilling holes in wood.



Proboscis sucks up liquids like flower nectar.



Canine teeth help catch and eat prey.